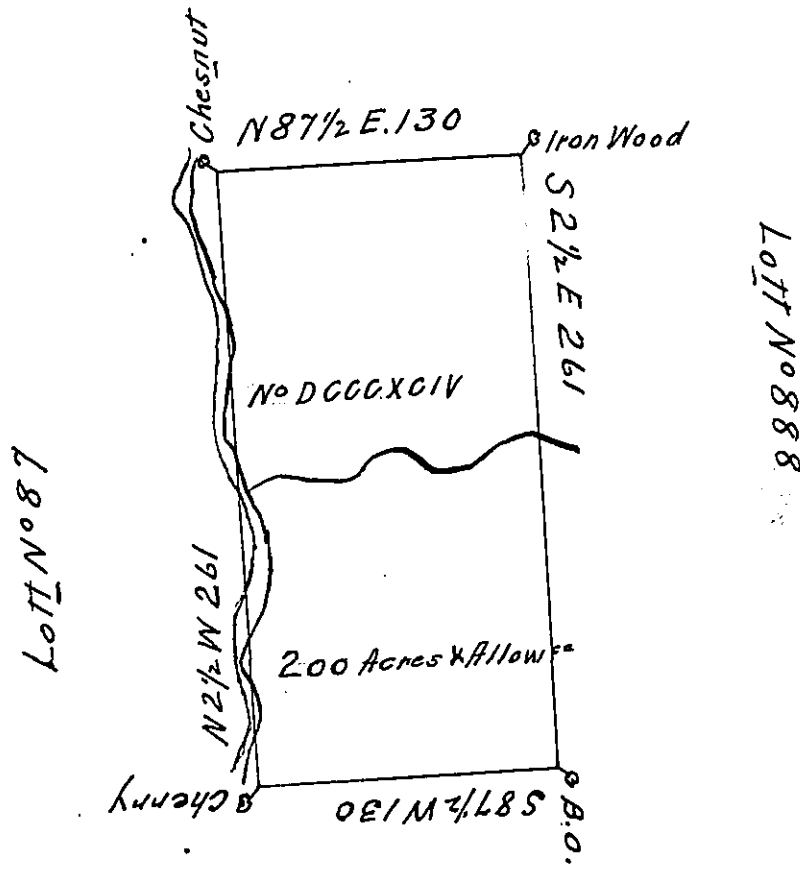


Lot N<sup>o</sup> 895



Lot N<sup>o</sup> 893

In pursuance of an Act of General Assembly of the State of Pennsylvania passed the 24<sup>th</sup> day of February, 1785, entitled an Act for directing the mode of distributing the Donation Lands promised the Troops of this Commonwealth and by order of the Surveyor General, with the approbation of the Honble the Executive Council I have Surveyed on the 27<sup>th</sup> day of September, 1785, the above described Tract of Two Hundred Acres of Land & Allowance of Six p Cent for Roads &c. N<sup>o</sup> DCCCXCIV - situate in District N<sup>o</sup>. 5. on the West Side of the Allegany in Westmoreland County.

To John Lukens Esq  
 Surveyor General

Benj Lodge D.S.  
 Don Land

IN TESTIMONY that the above is a copy of the original remaining on file in the Department of Internal Affairs of Pennsylvania, made conformably to an Act of Assembly approved the 16th day of February, 1833, I have hereunto set my Hand and caused the Seal of said Department to be affixed at Harrisburg, this Twelfth day of May 1908

*Henry Howard*  
 Secretary of Internal Affairs.